




B-143
Pre-Rinse Unit With Remote Control Valve

A complete pre-rinse unit with mixing faucet which enables the user to obtain the correct water temperature. Designed for use where a remote control valve is desired under or at the front of the sink. Dummy gooseneck base which is fitted on sink top has single shank 2" long, 1/2" NPS end has a union type 1/4" I.P.S. tailpiece. Spring-action type gooseneck gives the user a wide range of coverage. Unit is 38" high with 15" overhang and 6" clearance. Longer length hoses furnished on request.

B-141 Pre-Rinse Unit (not shown) — Same as B-143 except with overhead swivel gooseneck, hose and spray as on B-111.

B-142 Pre-Rinse Unit (not shown) — Same as B-143 except with overhead swivel gooseneck, hose and spray as on B-112.



B-109-1 Wall Bracket

A must on all gooseneck units. Furnished with 6" nipple which allows adjustment from 6 3/4" to 2" wall to center of clamp, by cutting off extra length of nipple. Also available with 9", 12", 18" and 24" nipples.

Check Valves

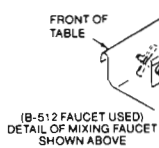
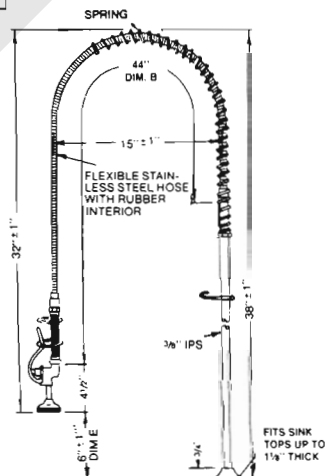
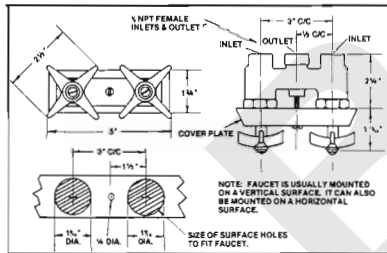
B-CVH-1/2" For horizontal use, 1/2" I.P.S. female
 B-CVH-3/4" For horizontal use, 3/4" I.P.S. female
 B-CVV-1/2" For vertical use, 1/2" I.P.S. female
 B-CVV-3/4" For vertical use, 3/4" I.P.S. female
 Furnished in Rough Brass finish.



B-153
Pre-Rinse Unit With Foot Pedal Valve Control

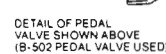
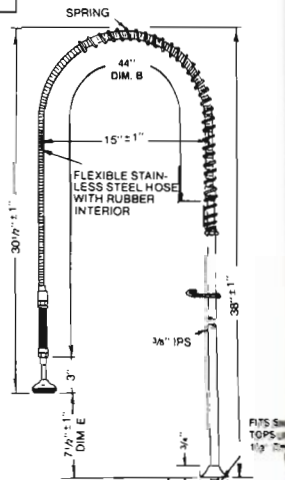
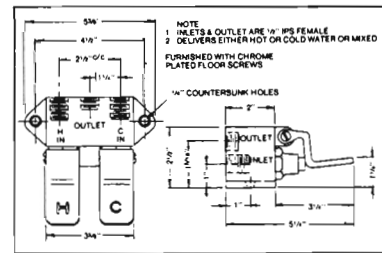
Designed for installations where a foot control is desired in place of the hand control. Self-closing pedal valve eliminates necessity for hand control valve on spray hose. Twin pedals on valve allow user to furnish any temperature water desired. Pedal valve has 1/2" I.P.S. female inlets on 2 1/2" centers. Dummy gooseneck base has single shank 2" long — 1/2" NPS — with union type 1/4" I.P.S. tailpiece. Spring-action gooseneck gives user a wide range of coverage. Unit is 38" high with 15" overhang and 7 1/2" clearance. Check valves are necessary on this unit. Longer length hoses furnished on request.

B-143 — TYPICAL INSTALLATION



PIPING BY OTHERS

B-153 — TYPICAL INSTALLATION



PIPING BY OTHERS